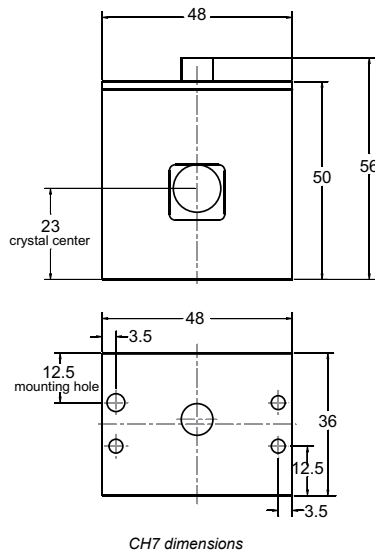


CH7

OVEN FOR NONLINEAR CRYSTALS



CH7 is a compact oven with build-in thermo-controller for temperature up to 60 °C. CH7 oven provides more crystal mounting options in comparison to CH3 or CH4. Like in CO1, each crystal is mounted into adapter before insertion in oven. CH7 and CO1 crystal adapters are compatible. Maximum crystal size for this model is 12×12 mm and the length of the crystal – 30 mm.

The pre-set temperature can be adjusted in ± 5 °C range by the help of potentiometer. The current temperature is not indicated. CH7 has “temperature ready” signal, changing state when pre-set temperature is reached. For additional protection of crystal surfaces from the dust or other contamination, we offer windowed version CH7-20.

SPECIFICATIONS

Model	CH7-15	CH7-30
Temperature tuning range near preset	± 5 °C	
Maximum crystals dimensions	12×12×15 mm	12×12×30 mm
Sealing (optional)	FS windows	
Preset temperature	30-60 (80) °C	
Long-term stability	± 0.2 °C	
Temperature OK output signal	Present	
Powering requirements	12-15 V DC	
Power consumption	6 W	
Sensor type	NTC Thermo resistor	
Output connector	Binder 719, 3 pin	
Dimensions, W×H×D	48×50×44 mm	48×50×56 mm

Specifications are subject to changes without advance notice.

Code **	Description, features	Price, EUR
CH7-15 – Provides READY signal, stability ± 0.2 °K, crystal length up to 15 mm		
CH7-15-y/y-x	Standard crystal sizes *	501
CH7-15-y/z-x	Non-standard crystal sizes	554
CH7-15-y/y-80	Version for temperature up to 80 °C	568
CH7-30 – Provides READY signal, stability ± 0.2 °K, crystal length up to 30 mm		
CH7-30-y/y-x	Standard crystal sizes *	580
CH7-30-y/z-x	Non-standard crystal sizes	631
CH7-30-y/y-80	Version for temperature up to 80 °C	644
CH7-20 – Provides READY signal, with AR coated windows for crystal protection		
CH7-20-y/y-x	Fixed temperature in RT-60 °C range, crystal size limited to 10×10×20 mm	838
CH7-20-y/y-80	Version for temperature up to 80 °C	901
Power supply PS-12		
PS-12-CH7	Power supply for CH3, CH4 or CH7 crystal oven, 100-240 VAC mains, +12 VDC output	64
Mounting stages for crystal ovens		
MS-1		180
MS-2		310

* Sizes 3×3, 4×4, ..., 12×12 are standard.

** y/y, y/z – crystal size, x – preset temperature in degrees of Celsius (30-60 °C range).

RELATED PRODUCTS

Mount MS-1
for fine tuning of CH3, CH4 or CH7 angle is available. The tuning range is $\pm 2.5^\circ$.



MS-2 type mount
can fit two CH3, CH4 or CH7 type ovens and is ideal for holding second and third or fourth harmonics generators.

